



# Future-Proof your Assets: From the Ground Up

When it comes to running a successful wean-to-finish operation, the condition of your facilities is more than just a backdrop—it directly impacts efficiency, animal welfare, and long-term profitability.

Learn more from  
Tad Woelber



Pipestone Post

# IMPORTANT NOTE FOR ON-FARM TEAM MEMBERS:

Please listen to this important note from Dr. Adam Schelkopf and Dr. Joseph Yaros.

If you frequently visit a farm, we strongly encourage you to complete your flu vaccine by **January 31, 2026**. To receive the vaccine incentive, please submit your documentation to HR.

We appreciate your prompt response and your commitment to protecting your teammates and our farms!

**Flu Vaccine Documentation Required**

Send an email to: [hrbenefits@pipestone.com](mailto:hrbenefits@pipestone.com) that includes:

- ★ Your Name
- ★ Your Employee ID
- ★ A copy of your immunization record showing the date.

- Where can you find your immunization record?
  - Blue Care Advisor App
  - Electronic Health Chart (AveraChart, MyChart, etc.)
  - Call your Health Provider for a printed copy

**When do I get paid?**

A \$40 incentive will be applied to the payroll following approval of your documentation.



**Note:** You must provide your immunization record, even if you received your flu shot during a wellness exam. The required documentation is the immunization record itself.

 PIPESTONE



If you frequently visit a farm, we strongly encourage you to complete your flu vaccine by **January 31, 2026**. To receive the vaccine incentive, please submit your documentation to HR.

We appreciate your prompt response and your commitment to protecting your teammates and our farms.

## Flu Vaccine Documentation Required

Send an email to: [hrbenefits@pipestone.com](mailto:hrbenefits@pipestone.com) that includes:

Your Name

Your Employee ID

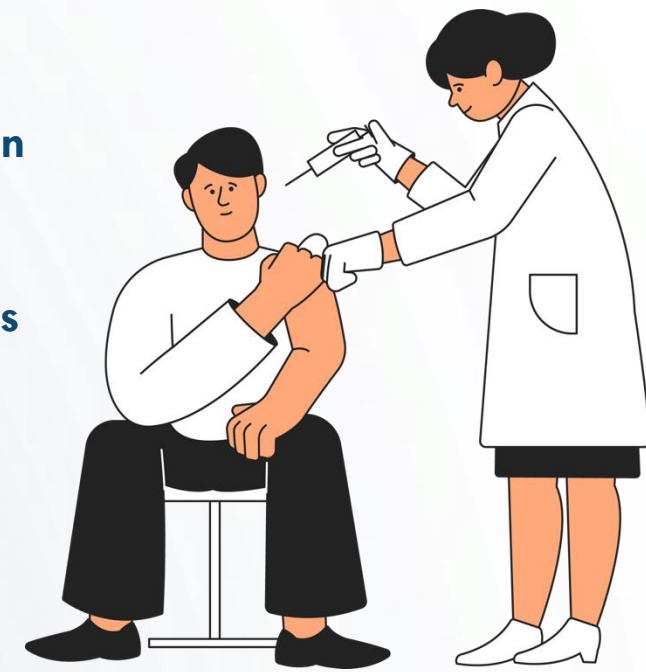
A copy of your immunization record showing the vaccination date.

◦ Where can you find your immunization record?

- 1 ■ Blue Care Advisor App
- 2 ■ Electronic Health Chart (AveraChart, MyChart, etc.)
- 3 ■ Call your Health Provider for a printed copy

## When do I get paid?

A \$40 incentive will be applied to the payroll following approval of your documentation.



Note: You must provide your immunization record, even if you received your flu shot during a wellness exam. The required documentation is the immunization record itself.

# Pipestone Post

# Door Decorating Contest Winners!



Most Creative:

1<sup>st</sup> Place – Scouts Livestock

2<sup>nd</sup> Place - FarmBooks



Best Overall:

1<sup>st</sup> Place – Info Bureau

2<sup>nd</sup> Place – Dekalb Office



Most Festive:

1<sup>st</sup> Place – AP/AR

2<sup>nd</sup> Place – Orange City Office

## Pipestone Post

# HOLIDAY HOURS

---



Pipestone offices will be CLOSED on the following holidays:

Wednesday, December 24 closing at Noon – Christmas Eve  
Thursday, December 25 – Christmas Day

Wednesday, December 31 closing at Noon – New Year's Eve  
Thursday, January 1 – New Year's Day

# Merry Christmas and Happy New Year!

Pipestone Post





## Pipestone was named a “**Best-in-Class Employer**” by Gallagher

Over 4,000 organizations completed Gallagher’s annual Benefits Strategy & Benchmarking Survey and were eligible but only 129 Large Employers (1000+ FTE) were awarded this recognition.

This achievement truly reflects the team’s commitment!

### Why were we recognized?

- Strategic planning for benefits and compensation
- Comprehensive wellbeing initiatives
- Workforce engagement and retention
- Retirement planning support
- Competitive healthcare cost management

Pipestone Post



# HELPING FARMERS SCHOLARSHIP



FIVE Scholarships - \$1,000 each



For kids of Pipestone customers



Open to HS seniors & college students



Preference for ag-related careers



**Apply Today!**

[www.pipestone.com](http://www.pipestone.com)





# 401(k) Reminder

**As we enter 2026, it is a good time to login to Principal.com and review your contributions and beneficiaries.**

For those that were auto enrolled, your contribution will increase by 2%.

- If you were auto enrolled and are currently at:
  - 2% you will be automatically increased to 4%
  - 4% you will be automatically increased to 6%
  - 6% you will be automatically increased to 8%
  - 8% you will be automatically increased to 10%
- You can stop this auto-escalation feature by choosing a contribution rate on Principal.com this change will need to happen on Principal.com by **December 26, 2025.**
- If you have any questions, please contact the payroll department.

[www.principal.com](http://www.principal.com)

Pipestone Post



**Warehouse -  
Kids-N-Kare**

**HR – Woodstock  
Community  
Outreach**



**Transport – Lights at the Lodge**

**Our teams have been busy during this holiday season!  
Thanks to everyone that has participated in a GiVE  
event!**

**GiVE**

**Pipestone Post**



Pipestone welcomed the Southwest Minnesota CEO class to introduce them to the TKI Conflict Mode Training.

18 high-school students from the surrounding schools were in attendance and participated in the 90-minute interactive training to identify their approach to handling conflict.



# TEAM SHOUTOUTS



## Shoutout to Brandon Whitney!

*“I’d like to give a special shout-out to Brandon Whitney from Scouts. As our FCT, he’s achieved a 100% score on his FCT audits for two consecutive years. This past Friday, he also organized an after-work get-together, renting a basketball court and bringing the team together for a great time.”*

- Gustavo Lopez, Scouts Livestock Site Manager

# MEET THE TEAM

## Windy Plains

Carpenter, SD



Team members: Scott Watkins, Kaylee Tol, Michelle Lantgen, Clarissa Daniels, Javier Martinez Rosales, Gabriel Hernandez Frias, Unathi Nobandla, Ruth Soltero Rodriguez, Mylee Weets, Juan Carreno

## Twin Rock

Pipestone, MN



Team members: Ann Petersen, Juan De la Cruz Alvarez, Oscar Mondragon, Everardo Cortes Medellin, Sobeyda Diaz Colorado, Ana Arias, Alicia De Gante Ortiz, Jose Valdepena Sauza, Julio Romero Hernandez, Roxana Ramirez Martinez, Maria Velasquez Martinez, Luis Esquivel Galiano, Verali Contreras, Marlon Hernandez

# Pipestone Post

## **Pipestone is proud to welcome our newest talent.**

**Please say hello to new team members, hired 12/9/25 – 12/15/25.**

<b>Wilder U Aragon –</b>	Swine Tech at Fox Run
<b>Milton Batres Flores –</b>	Swine Tech at Hillside
<b>Leslieann M Rivera Alvarez –</b>	Swine Tech at Alliance
<b>Clara Hernandez Martinez –</b>	Swine Tech at Salem 2
<b>Jairo Tinoco –</b>	Swine Tech at Goose Lake 2
<b>Edgar Isaac Matute Mejia –</b>	Swine Tech at Goose Lake 2
<b>Jose Solis Martinez –</b>	Farm Team-Swine Tech at Pipestone Business Services
<b>Jairo Torres Ochoa –</b>	Swine Tech at Silver Top
<b>Edin A Gomez –</b>	Swine Tech at Kodiak Livestock
<b>Melisa Mejia –</b>	Swine Tech at Liberty
<b>David T Trujillo –</b>	Swine Tech at Elite Pork
<b>Timoteo P Pereira –</b>	Swine Tech at Rosewood



# **Pipestone Post**



# HAPPY BIRTHDAY!

**WEDNESDAY**  
**12/24**

**Ruth Obando**  
Fox Run

**Enyenbeth Sumoza Silva**  
Morgan Hill

**Jesus Sanchez Jaramillo**  
FarmTeam

**THURSDAY**  
**12/25**

**Erin McCoy**  
PVS

**Martha Contreras Vega**  
Nelson GDU

**Uber Perea Rascon**  
Blue Stem

**Salvador Torres**  
S & S Farms

**Fernando Carrillo  
Gonzalez**  
Site A

**FRIDAY**  
**12/26**

**Patricia Lopez  
Barron**  
Big Sioux

**Jeffrey Runia**  
Business Services

**Margarita Mendez  
Flores**  
Husky

**Sofia Galindo  
Rosado**  
Husky

**Juan Carreno**  
Windy Plains

**SATURDAY**  
**12/27**

**Erika Lizzete Lopez  
Grajales**  
Husky

**Jose Luis Jacobo  
Torres**  
Jayhawk

**Grecia Oseguera  
Romo**  
Chariton

**Mercedes Licea**  
Fox Run

**SUNDAY**  
**12/28**

**Jamie Mertins**  
Alliance

**Nancy Delgado  
Hernandez**  
S & S Farms

**Carlos Prada Lopez**  
Calumet 1

**Santiago Rebollar  
Reyes**  
Jackrabbit

**Jose Rivera**  
Pipestone  
Management

**Joshua Norling**  
Transport

**MONDAY**  
**12/29**

**Shawnie Veldhuizen**  
PVS

**Galdina Alvarado**  
Future Pork

**David Jimenez Arias**  
PRM

**Logan Roach**  
Business Services

**Gladys Perez Sequeira**  
Fox Run

**Fatima Ortiz Mascorro**  
Silver Top

**TUESDAY**  
**12/30**

**Shelli Hershey**  
Skyline

**Lori Huml**  
Business Services

**Samuel Fahleen**  
Big Sioux

**Cristian Zuniga**  
Big Sioux

**Anna Heckethorn**  
Deer Run

**Carlos Montalvo  
Santiago**  
Goose Lake 2

# WORK ANNIVERSARIES

NAME	START DATE	YEARS	LOCATION	TITLE
Lisa Brands	12/30/2013	12	Pipestone Applied Research	Senior Info Analyst
Marc Chance	12/30/2013	12	Skyline	Filter Compliance Tech
Ana Hernandez Zuniga	12/28/2020	5	Chariton Gilts	Farrowing Lead
Cody Rodgers	12/30/2020	5	Rosewood	Gestation Lead
Jesse Torres	12/28/2021	4	Liberty Livestock	Swine Tech
Ana Rios Dominguez	12/28/2022	3	Banner Farms	Pipestone Emerging Leader
Dustin Donth	12/27/2022	3	ProPartners Milling	Feed Mill Maintenance Worker
Jeronimo Gomez Hernandez	12/28/2022	3	Pipestone Business-FarmTeam	Farm Team Swine Tech
Maria Hernandez Castillo	12/28/2022	3	Nokomis Farms	Farrowing Lead
Cecilia Regalado	12/28/2023	2	Mustang Pass	Swine Tech
Juan Gonzalez	12/27/2023	2	Independence Livestock	Swine Tech
Axel Lopez	12/24/2024	1	Dylbrook Gilts	Swine Tech
Jonathan Levario	12/27/2024	1	Midwest Farm 2	Swine Tech
Luis Gonzales	12/30/2024	1	Liberty Livestock	Swine Tech
Luis Santoyo Rodriguez	12/30/2024	1	Dry Lake Farms	Gestation Lead
Oseas Gomez Cruz	12/26/2024	1	Nordic	Pipestone Emerging Leader
Rene Montes Pineda	12/30/2024	1	Liberty Livestock	Swine Tech
Rosalba Banos Santos	12/26/2024	1	Huckleberry Pork	Sow Farm Office Coordinator



# Ag Trivia

*Merry Christmas!*

What are one of the main crops that candy canes are made from?



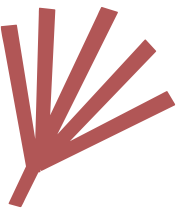
submit your  
answer here



From last week:

Which U.S. state is the largest producer of poinsettias>

**Winner & Answer: Parker Bland – California**



**Pipestone Post**